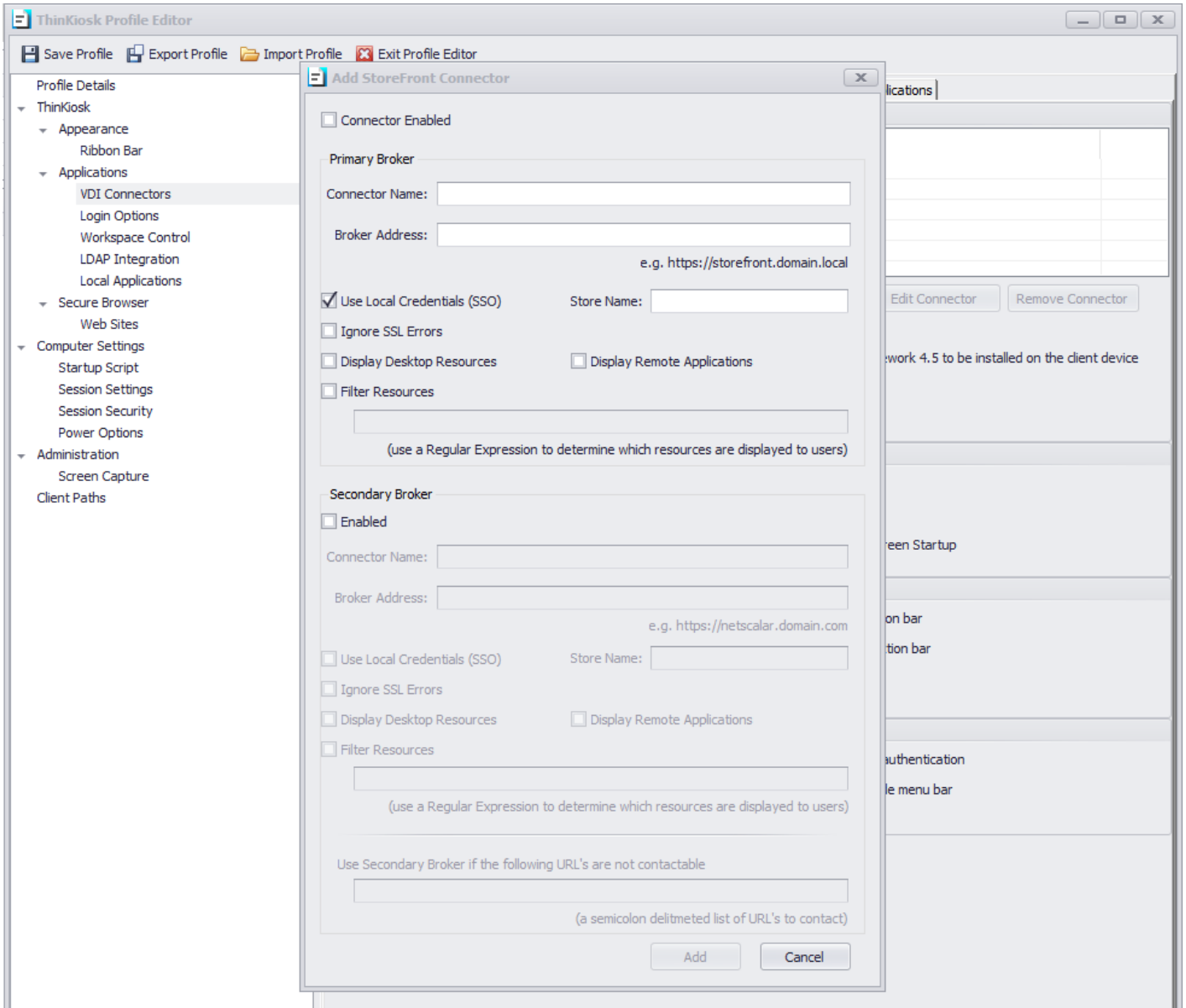
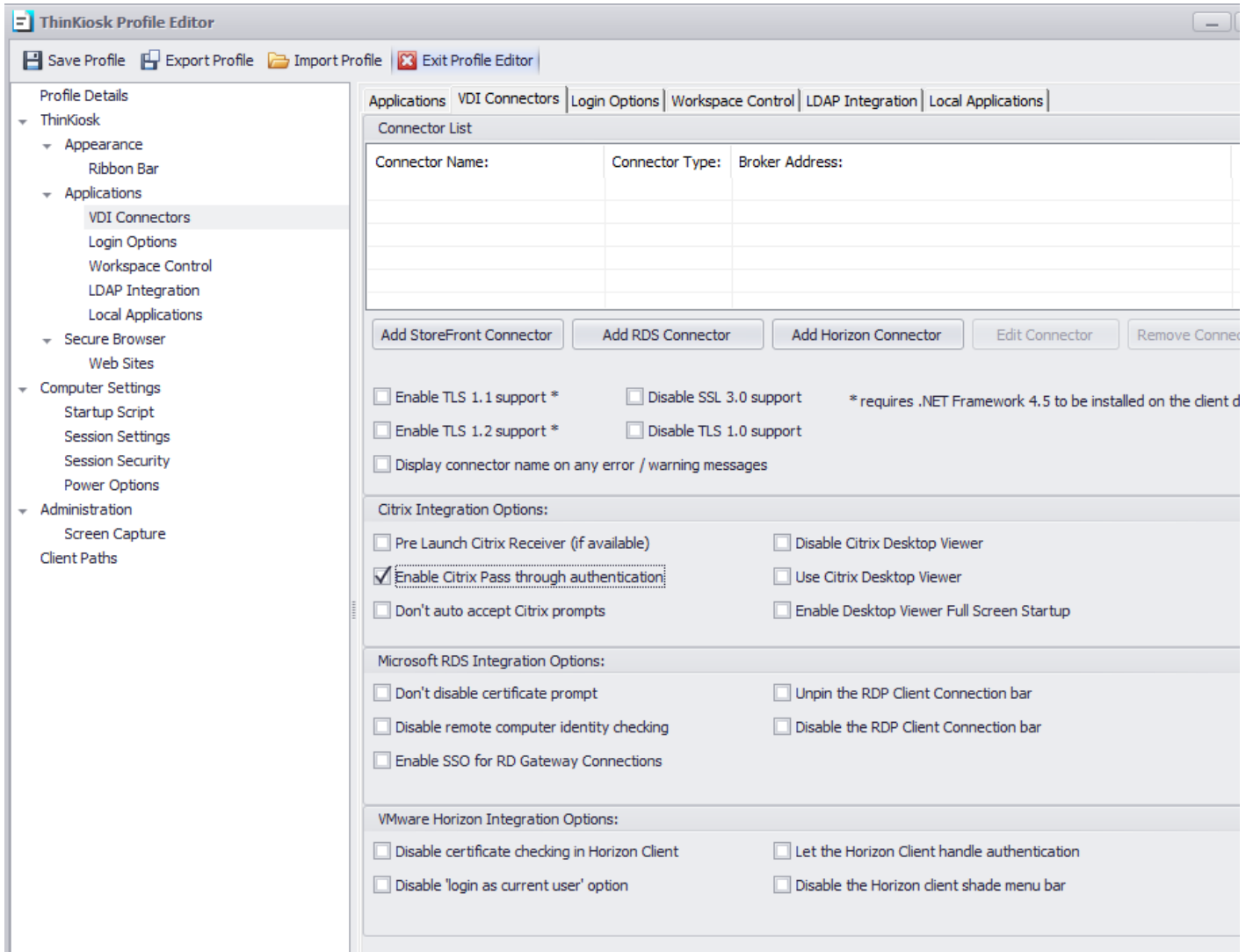


SINGLE SIGN ON

Creating a connector with a SSO enabled is really easy. Tick the connector enabled on top, type the Connector name with the address. Chose the option “Use Local Credentials (SSO) and a personal Store Name. Once done save the option and refresh the profile,if in the Management Console, or restart ThinkKiosk if using local profile editor.



Don't forget to tick the option “Enable Citrix Pass through authentication” and make sure that Domain-pass through is also enabled at the server side. If the Domain-pass through is not selected on the server side an error will appear.



Manage Authentication Methods - XXXXXXXXXX

Select the methods which users will use to authenticate and access resources. i

Method	Settings
<input checked="" type="checkbox"/> User name and password i	⚙️ ▼
<input type="checkbox"/> SAML Authentication	⚙️ ▼
<input checked="" type="checkbox"/> Domain pass-through <small>Can be enabled / disabled separately on Receiver for Web sites</small>	
<input type="checkbox"/> Smart card <small>Can be enabled / disabled separately on Receiver for Web sites</small>	
<input type="checkbox"/> HTTP Basic	
<input type="checkbox"/> Pass-through from NetScaler Gateway	⚙️ ▼

Installing and uninstalling the authentication methods and the authentication service settings are included in the advanced options.

Advanced ▼

OK

Cancel